

MP PUMPS, INC.

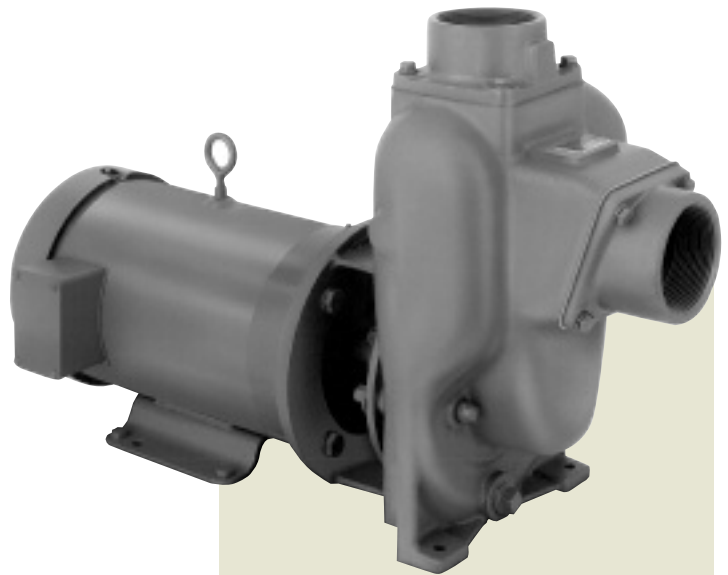
PETROLEUM 8

Self-Priming Centrifugal Pump

Specifically designed for transfer of petroleum based fluids, MP's *Petroleum 8* series is available in three (3) distinct models: **PO 8**, **PG 8** and **PE 8**.

Designed to close-couple to 56C and 145TC frame electric motors, the models are also available as *Pumpaks*. Additional mounting options include pedestal, diesel-engine drive, and hydraulic drive.

Models are self-priming and capable of 20 foot suction lift.



SPECIFICATIONS:

Suction and Discharge	2" x 2" NPT
Housing	PO 8 Cast Iron, Ductile Iron (optional) PG 8 Ductile Iron PE 8 Ductile Iron
Impeller, Semi-Open. PO 8	Cast Iron PG 8 Cast Iron, Aluminum (optional) PE 8 Cast Iron, 316 SS (optional)
Wear Plate	PO 8 Steel PG 8 Aluminum PE 8 Steel
Mechanical Seal . . .	PO 8 Type 21 Viton/Carbon/NiResist/SS PG 8 Type 2 Viton/Carbon/Silicon Carbide/SS PE 8 Type 2 Viton/Carbon/Silicon Carbide/SS
Gasket, Flange	Composite
Shaft Sleeve	Stainless Steel
Fasteners	Stainless Steel
Clamp, Shaft	Brass, Lead-Free

COMPATIBLE FOR:

- **PO 8** - Biodiesel, Fuel Oil, Diesel
- **PG 8** - Gasoline, Avgas, Kerosene, Jet A/8
- **PE 8** - Ethanol, E 85

MOUNTING OPTIONS:

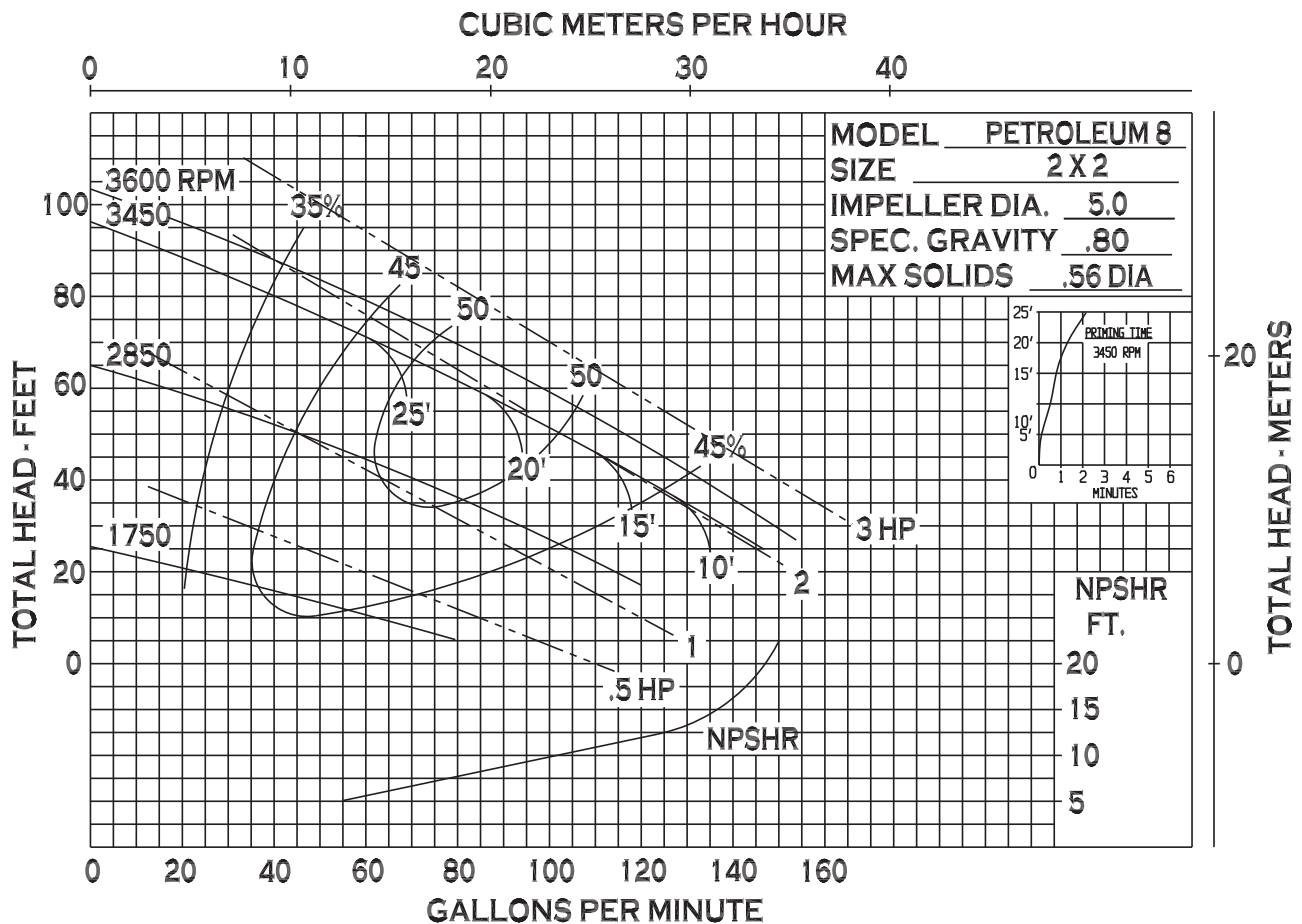
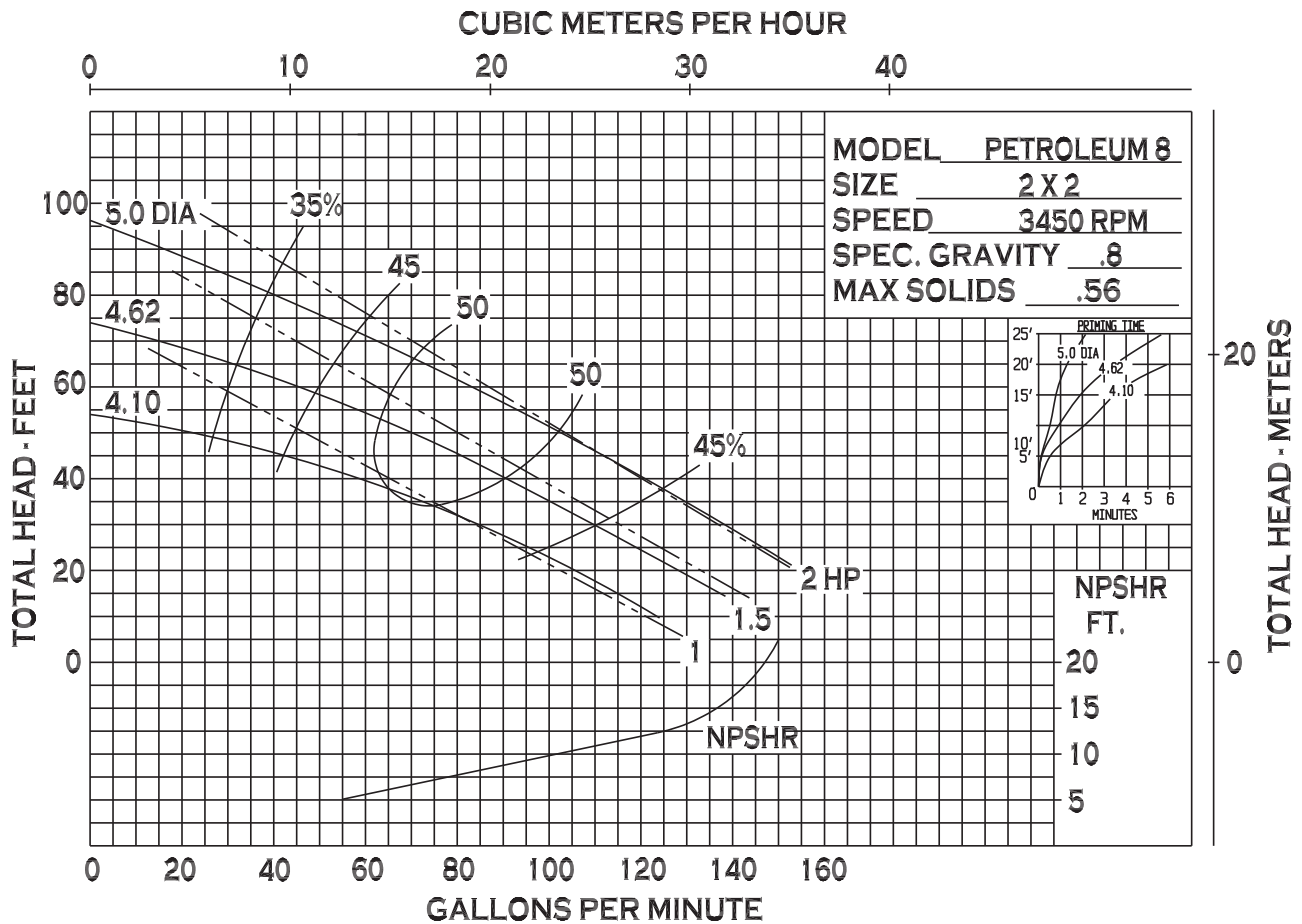
Pedestal Or Close Coupled To Nema C Face Motors

- **PO 8** - TEFC
- **PG 8** - Explosion Proof Class 1 Group D
- **PE 8** - Explosion Proof Class 1 Group D

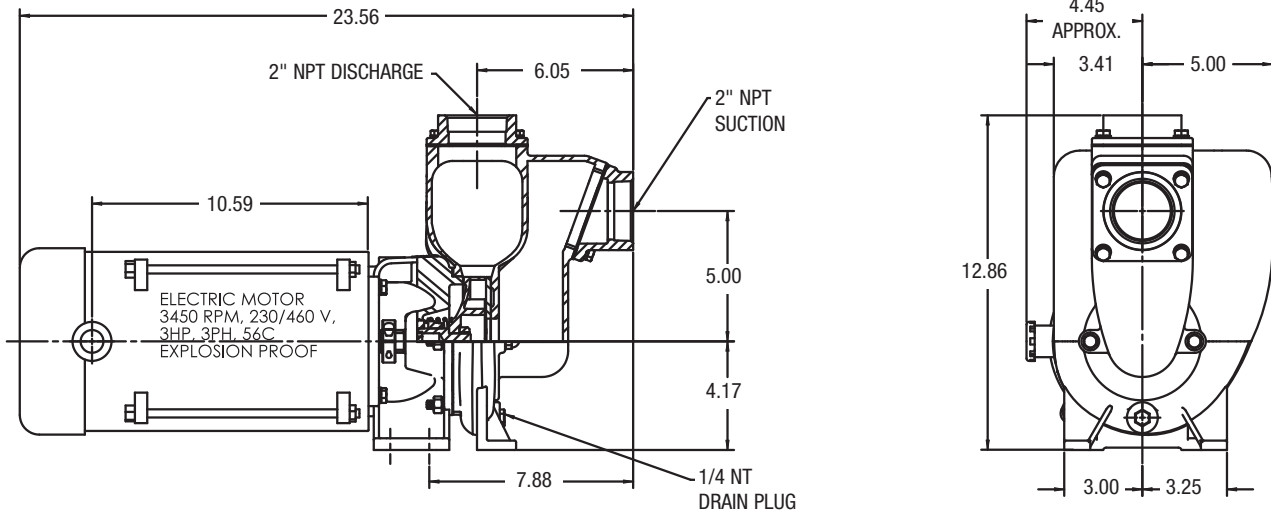
PERFORMANCE TO:

155 GPM 96 HD. FT. @ 3450 RPM
80 GPM 25 HD. FT. @ 1750 RPM

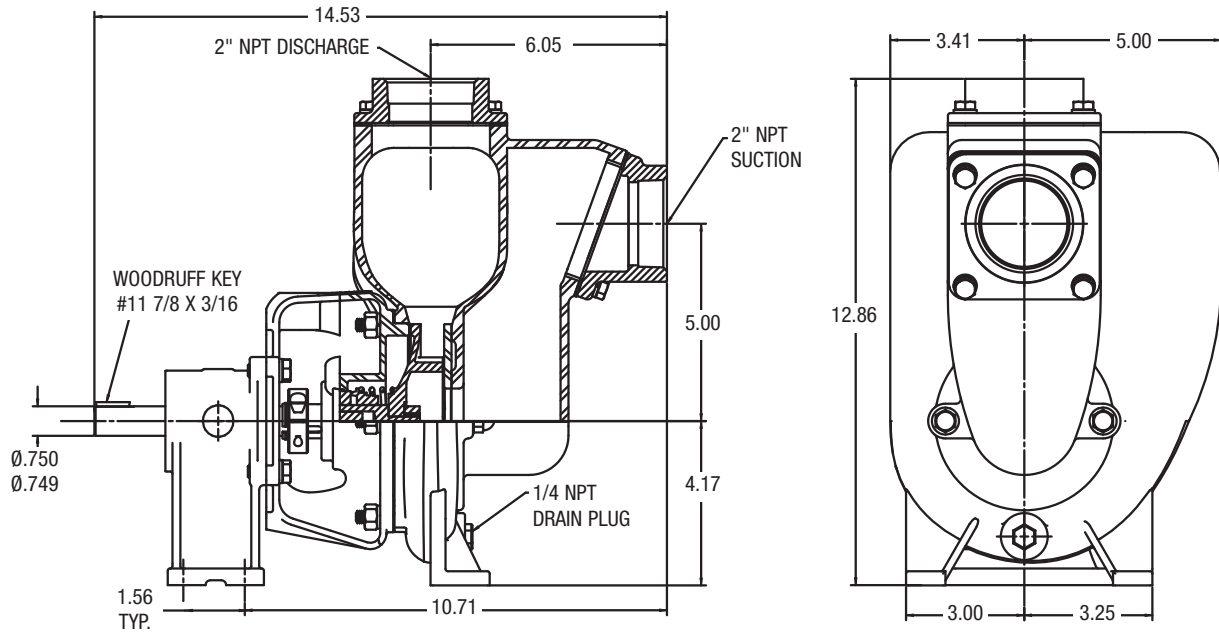
PETROLEUM 8



CLOSE COUPLED - ELECTRIC MOTOR



PEDESTAL-MOUNT



MP PUMPS, INC.

34800 BENNETT • FRASER, MI 48026-1686
 (586) 293-8240 • FAX (586) 293-8469
 (800) 563-8006 • www.mppumps.com

www.mppumps.com

FORM 8139-A (04/08)
 Litho in USA